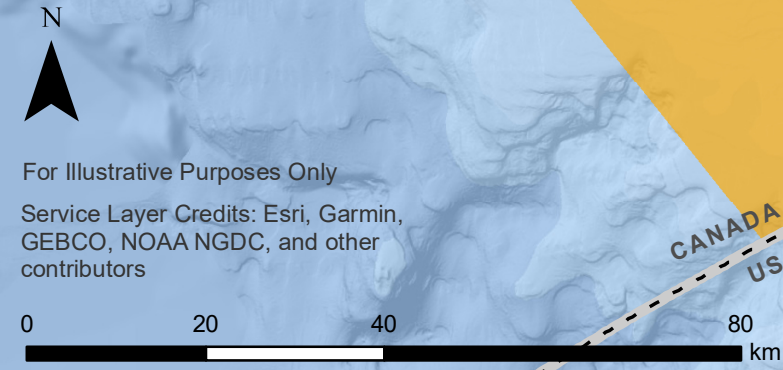


- Legend**
- Interim Sanctuary Zones
 - Area-Based Fishery Closures
 - 400m Approach Distance
 - ECHO Program Large Commercial Vessel Slowdowns and Lateral Displacement (Voluntary)
 - Traffic Separation Schemes

Please note, map does not include all fisheries closures in effect.

- Keep Your Distance**
- 400 m away from killer whales in southern BC coastal waters (orange area)
 - 200 m away from all killer whales in BC, outside designated 400 m approach areas.
 - 200 m away from all whales, dolphins and porpoises when in resting position or with a calf
 - 100 m away from all other whales, dolphins and porpoises

- Voluntary**
- When within 1000m of killer whales:
 - Stop fishing (Voluntary Fishing Avoidance Zone).
 - Slow down to 7 knots or less.
 - Turn off echosounders and fish finders when not in use.
 - Place engine in neutral idle and allow animals to pass if your vessel is not in compliance with the approach distance regulations.
 - Be whale wise and know the rules on both sides of the border.
- Visit: bewhalewise.org.

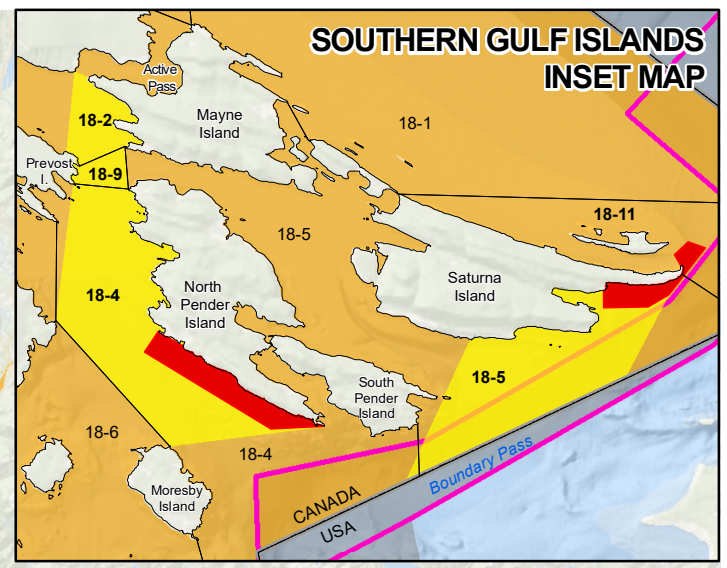


- Swiftsure Bank**
- Interim Sanctuary Zone: No fishing or boating (with exceptions) from June 1 - November 30, 2021.
 - Area-based fishery closure: No recreational or commercial salmon fishing in portion of Subarea 121-1 in effect July 16 - October 31, 2021.

- Strait of Juan de Fuca**
- Area-based fishery closures: No recreational or commercial salmon fishing in Subareas 20-3 and 20-4 in effect August 1 - October 31, 2021.

- Southern Gulf Islands***
- Interim Sanctuary Zones: No fishing or boating (with exceptions) from June 1 - November 30, 2021.
 - Area-based fishery closures: No recreational or commercial salmon fishing in Subareas 18-9 and portions of 18-2, 18-4 and 18-5 in effect from first confirmed Southern Resident Killer Whale detection to October 31, 2021. Monitoring for Southern Resident Killer Whales in the Gulf Islands will begin June 1st.
- *also see inset map

- ECHO Program Initiatives (Pink Areas)**
- Voluntary large commercial vessel slowdown in Haro Strait and Boundary Pass.
 - Voluntary lateral displacement of inshore traffic in the Strait of Juan de Fuca.
 - Voluntary slowdown for outbound large commercial vessels in Swiftsure Bank.



Overview of 2021 management measures to protect Southern Resident Killer Whales

