

Check out some additional resources:



Oceans Protection Plan
<http://www.canada.ca/protecting-our-coasts>



Protecting Canada's Endangered Whales
<https://www.tc.gc.ca/en/campaigns/working-together/protecting-endangered-whales.html>



Transport Canada's Interim Order
(detailed information)
<http://www.tc.gc.ca/eng/mediaroom/interim-order-protection-killer-whales-waters-southern-british-columbia.html>



Transport Canada's Interim Order
(Questions and Answers, and maps)
<https://www.tc.gc.ca/eng/mediaroom/frequently-asked-questions-io-protection-killer-whales-waters-souther-british-columbia.html>



Vancouver Fraser Port Authority's ECHO Program
<http://www.portvancouver.com/echo>



Fisheries and Oceans Canada
<http://dfo-mpo.gc.ca/campaign-campagne/protectingwhales-protegerbaleines/index-eng.html>



Be Whale Wise
Bewhalewise.org



Report violators to
Fisheries and Oceans Canada:
1-800-465-4336



If you have any questions about
the Interim Order, please contact
Transport Canada at:
TC.SRKW-ERS.TC@tc.gc.ca

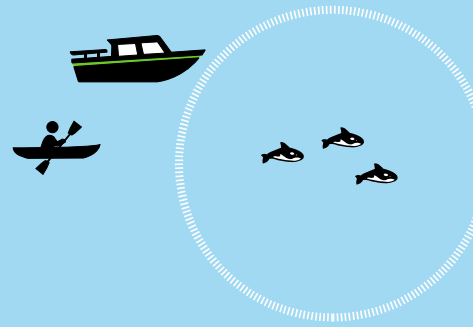


If you have any questions about
fishery closures or boating around
whales, please contact Fisheries and
Oceans Canada at:
DFO.SRKW-ERS.MPO@dfo-mpo.gc.ca

KEEP 400 METRES AWAY

When you see any killer whales.
It's the law!

(around 4 footballs fields)



AVOID WHALE SANCTUARY

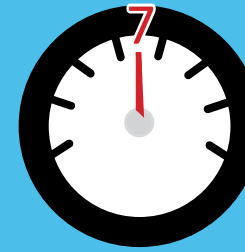
No fishing or boating around Swiftsure
Bank, east coast of Saturna Island and
south-west of North Pender Island.
It's the law!



turn over for detailed map

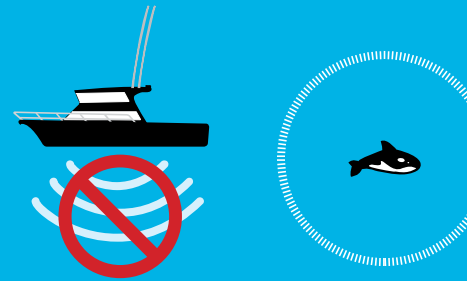
REDUCE SPEED & AVOID FISHING

Reduce your speed to less than 7
knots and avoid fishing when you're
within 1,000 metres of a killer whale.



REDUCE VESSEL NOISE

Turn off echo sounders when not in use,
and engines to neutral idle when within
approach distance of a killer whale.



Boating Around Killer Whales South Coast of BC · 2019



Boaters need to be aware when boating around killer whales. Always slow down when killer whales are near, if safe to do so.

Rules that apply year-round:

- **Keep 200 metres away** from all killer whale populations in B.C. and the Pacific Ocean.

Rules from June 1 until October 31 in critical habitat:

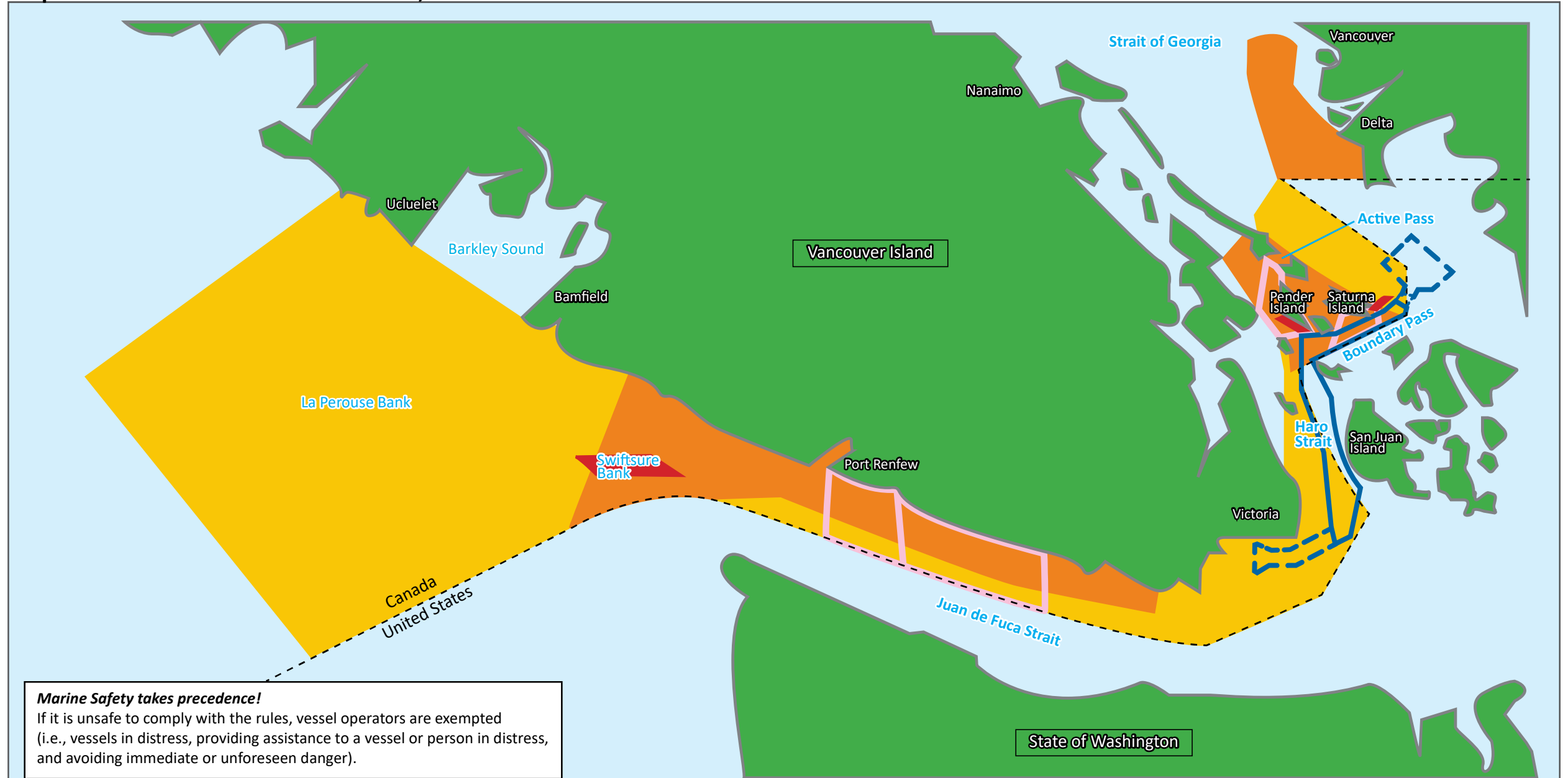
- **Keep 400 metres away** when you see any killer whales.
- **No fishing or boating** around certain sections of Swiftsure Bank, off the east coast of Saturna Island and south-west of North Pender Island.

Additional ways you can help:


- Go Slow! **Reduce your speed** to less than 7 knots and avoid fishing when you're within 1,000 metres of a killer whale. Areas to be aware of include Gulf Islands, the Strait of Juan de Fuca and the Mouth of the Fraser River.
- **Reduce noise** from boats by turning off your echo sounders when not in use, and engines to neutral idle when within 400 metres of a killer whale.

Please help protect Southern Resident Killer Whales! They live in the southern coast of British Columbia and are endangered.

Map of South Coast of Vancouver Island, British Columbia



Marine Safety takes precedence!
 If it is unsafe to comply with the rules, vessel operators are exempted (i.e., vessels in distress, providing assistance to a vessel or person in distress, and avoiding immediate or unforeseen danger).

<p>In all Yellow and Orange Areas (critical habitat), vessels:</p> <ul style="list-style-type: none"> • Must keep 400 m away except for vessels in transit. Some whale watching operators can view non-Southern Resident Killer Whales up to 200 m if they meet specific conditions • Should turn off echo sounders when not in use • Should turn engine to neutral idle when within 400 m of a whale 	<p>In all Orange Areas, vessels:</p> <ul style="list-style-type: none"> • Should avoid fishing within 1000 m of killer whales • Should go slow (7 knots or less) within 1000 m of killer whales 	<p>In all Red Areas, vessels:</p> <ul style="list-style-type: none"> • Must avoid Interim Sanctuary Zone (Accessing a residence or business on N. Pender or Saturna Island; and vessel/person fishing for FSC or domestic purposes pursuant to a treaty; Indigenous persons exercising an existing right, other than for fishing, for non-commercial purposes, are exempt.) 	<p>Pink Outline Areas:</p> <ul style="list-style-type: none"> • Fishery closures for recreational and commercial salmon (August 1-October 31) <p>Blue Outline Area (coordinated by ECHO Program) (Large Commercial Vessel Measures - Voluntary)</p> <ul style="list-style-type: none"> • Haro Strait and Boundary Pass vessel slowdown trial 	<p>Visit: http://www.pac.dfo-mpo.gc.ca/fm-gp/maps-cartes/srkw-ers/index-eng.html or use QR Code to view detailed maps online</p> 
---	--	---	--	---