



Islands Trust

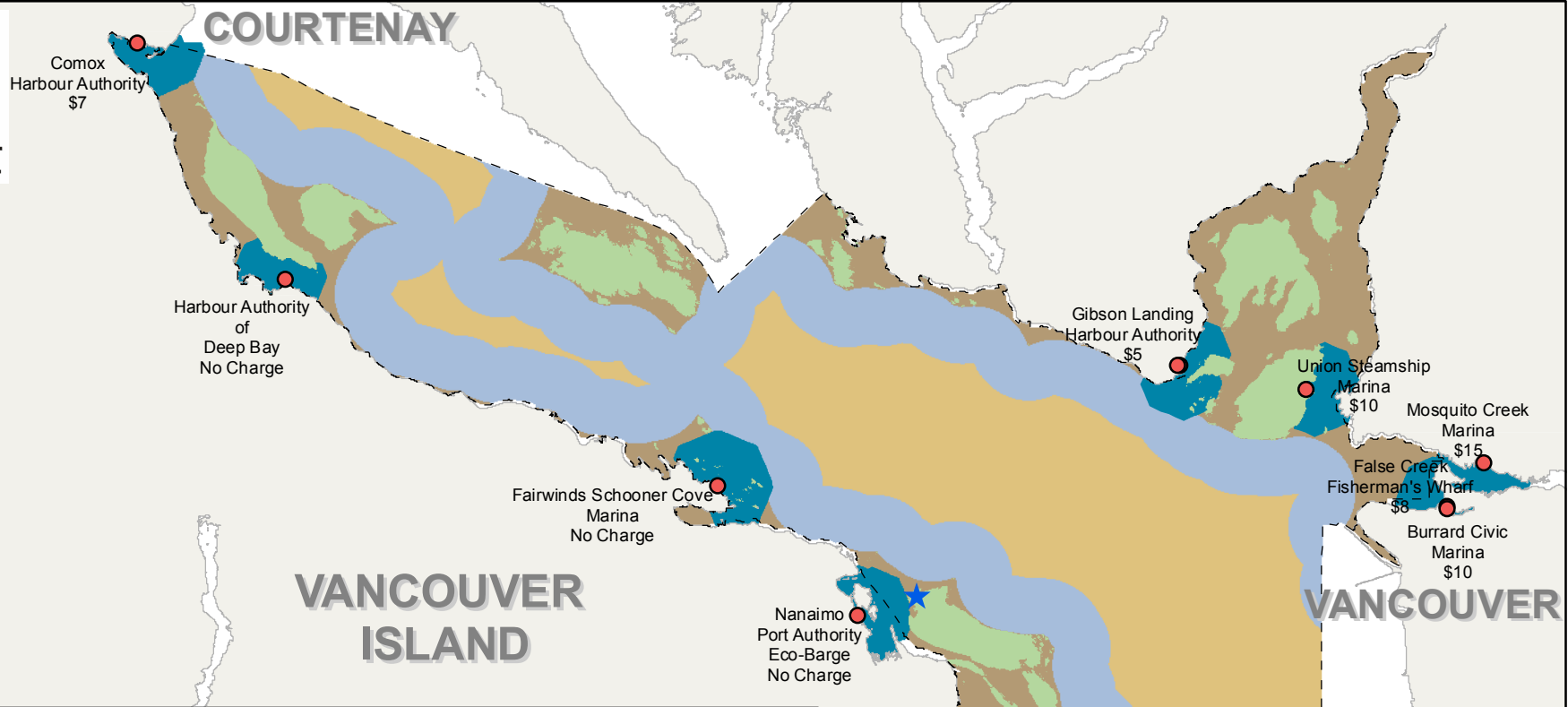
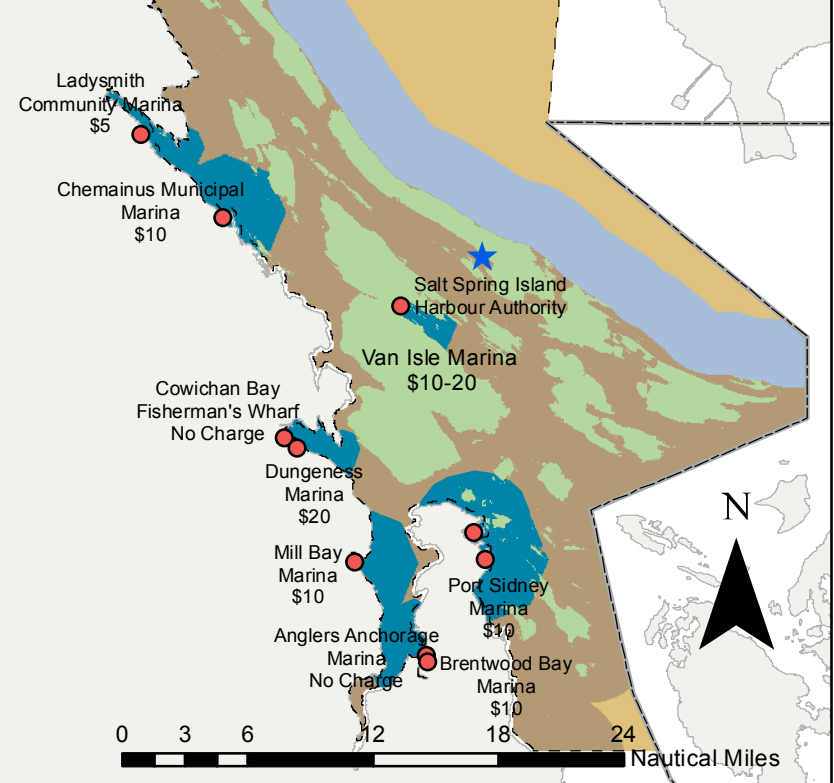


Illustration of Potential Effect of *Islands Trust's* Proposed Amendments to Section 96 of the *Vessel Pollution and Dangerous Chemicals Regulations* in the Islands Trust Area

- Pump Out Stations
- ★ Designated Sewage Area
- International Border
- Islands Trust Boundary
- Dumping permitted because > 3 nautical miles from shoreline (Status quo)
- Dumping prohibited within 3 nautical miles of a pump-out service (Status quo is no required distance from pump-out specified)
- Dumping prohibited < 3 nautical miles from shoreline (status quo)
- Dumping permitted in these waters that are less than 6 nautical miles from shore to shore, when no reception facility available to receive the sewage in an environmentally safe manner. The vessel may discharge raw sewage if en route at a speed of at least 4 knots or, if discharge is not feasible at that speed, the discharge can be made:
 - a) during an ebb tide, while the vessel is en route at the fastest feasible speed and into the deepest water that are located farthest from shore or,
 - b) while the vessel is en route at the fastest feasible speed and into the deepest and fastest moving waters that are located the farthest from shore.



*May not include all pump-out stations in the Islands Trust Area
 * Applies to boats < 400 gross tonnes certified to carry <= 15 people

Map Distances Are Approximate
 Produced: November-27-14

